



PANELPIEDRA KRETTA BURNIND

Fiber Laser cutting and shaping

PKB-1500_F fiber laser cutting machine used in industrial processing:

Metal cutting, aerospace, electronics, household appliances, automobiles, precision accessories, and other manufacturing industries.

Our Fiber Laser is designed with a carrier structure with double transmission with double rack and double high-speed aluminum drive system



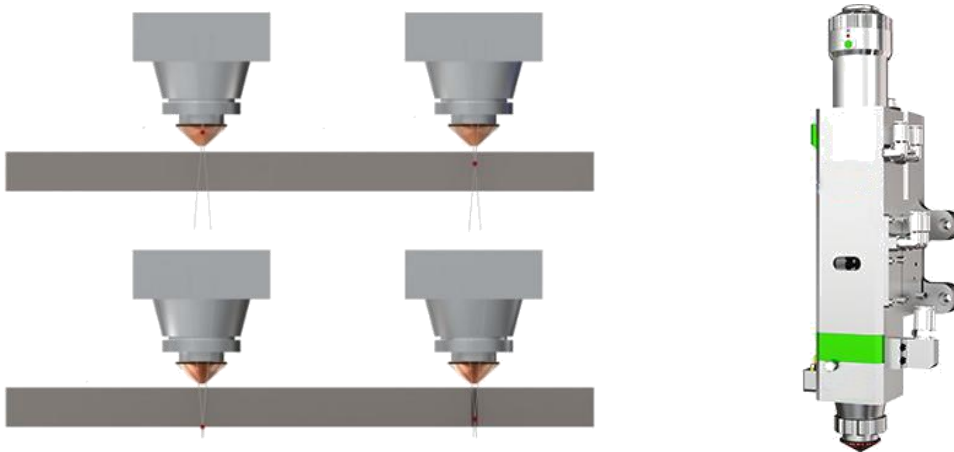


PANELPIEDRA KRETTA BURNIND

Fiber Laser cutting and shaping

Auto-Focus function

Focus is controlled by the internal precision servo motor, with no need for manual operations.

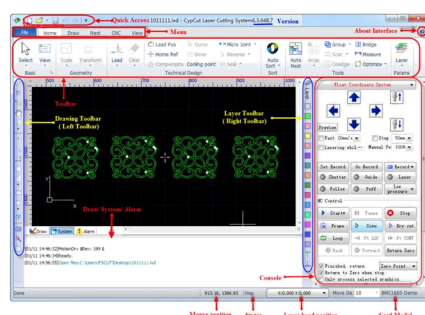


Software

I Support AI / PLT / Gerber formats, accept Mater Cam, Type3 international standard output G code, I Entry / exit, shear compensation, microjoining, bridging, rear entry, blanking.

I Different drilling methods available,

Separate laser power / frequency / gas type / gas pressure / track height can be set when cutting and piercing. The WIFI remote control panel.



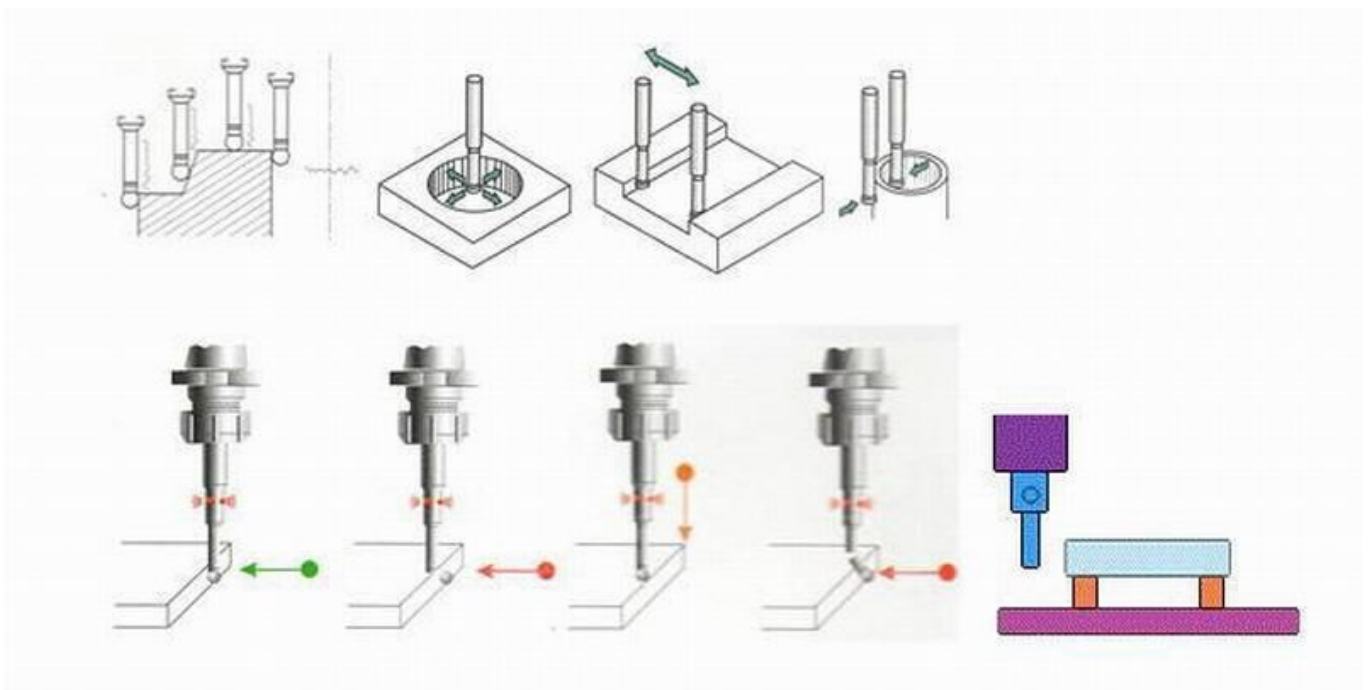


PANELPIEDRA KRETTA BURNIND

Fiber Laser cutting and shaping

Edge Search.

The machine is equipped with an edge finder function improving the machining efficiency and for processing the profile to be cut.



Precise and fine cut

Analog control according to the axis movement speed and laser power variation to ensure the cutting effect of blade corners (sharp).





PANELPIEDRA KRETTA BURNIND

Fiber Laser cutting and shaping

PKB-1500_F

Laser Specifications

Laser power

Transmission System

Full speed

Positioning accuracy

Clamp repositioning accuracy

Format

Work environment

Power of the equipment

Power supply

Total weight

Overall size

Parameters

1000w-3000w

Double rack and pinion and servo drive

60m/min

±0.03mm/1000mm

±0.02mm/1000mm

LXD、DXF、PLT、AI、NC

0-45 ° , Humidity ≤ 80%, non-condensing

8KW (does not include laser generator and chiller)

Trifase 380V/50Hz or 60Hz

3000Kg

5010mm×2260mm×1900mm

Examples of Laser Cutting

